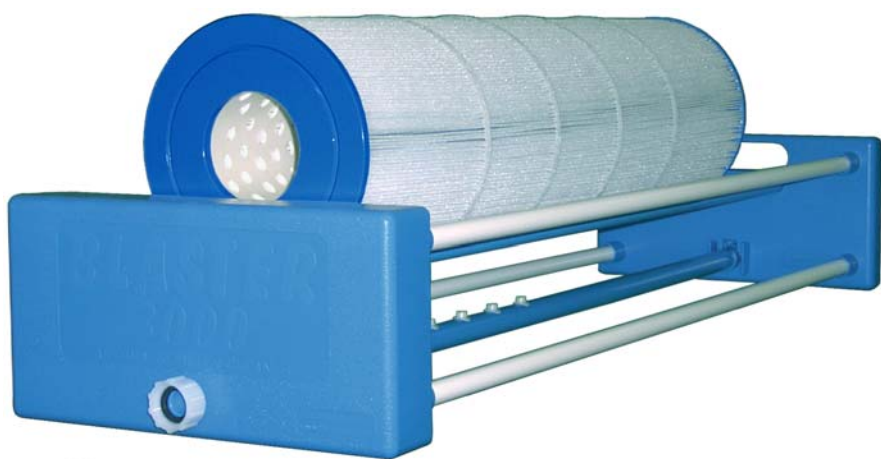


BLASTER 3000™

AUTOMATIC FILTER CLEANER



INSTRUCTIONS

Congratulations on purchasing the **BLASTER 3000™ Automatic Filter Cleaner**. Cleaning your dirty pool filter will now be a whole lot easier. Taking just a few minutes, the **BLASTER 3000™** will clean your filter by automatically rotating it while **PowerJets** blast focused water to clean the filter pleats. The **BLASTER 3000™** is designed to accommodate cartridge filters up to 34” in length. Since the **PowerJets** extend along half the unit length, longer filters will need to be flipped to complete cleaning.

Follow the steps below to get started:

1. Connect Hose

Attach a garden hose to the swivel nut hose fitting.

Turn the swivel nut counter-clockwise to tighten.



2. Add Nozzle Covers (If needed)

Attach nozzle covers to close off unneeded **PowerJets**. This will also increase the pressure available to the remaining **PowerJets**.

Use firm pressure to press the nozzle cover on from directly above the **PowerJet** nozzle.



3. Place Filter

Place your dirty filter on the center support rods as shown.

Make sure the flanges of the filter are resting on the center support rods.



4. Add Grip Sleeves (If needed)

Heavy filters might have difficulty properly gripping the support rods. If the support rods are turning and the filter is not rotating, try using the grip sleeves.

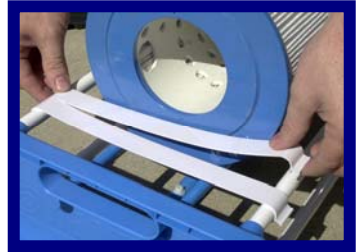
Place four grip sleeves, two on each support rod under each end flange.



5. Add Spray Covers (If needed)

Attach spray covers as needed to block the spray from coming from the area not covered by your filter.

Attach the spray covers to the top outer frame tubes. Leave unused spray covers on the bottom frame tubes.



6. Turn Water On

Turn the water on at the spigot and gradually open to full pressure.

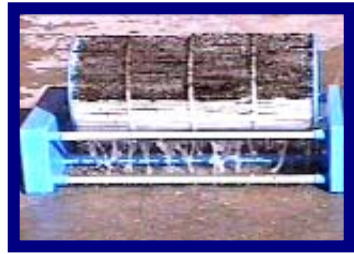
The water will spray from the **PowerJets**, and your filter will begin to rotate.



7. The Cleaning Begins

The **BLASTER 3000™** will now automatically clean your filter. The process normally takes between 3 - 8 minutes depending on how dirty your filter is. Longer filters will need to be flipped to complete cleaning.

When no more debris is seen in the runoff water the filter is clean.



HOSE FLOW RATE and PERFORMANCE

**MINIMAL
EFFICACY**



5 GPM
(5 Gallon bucket
fills in 1 minute)

**MODERATE
EFFICACY**

7 GPM
(5 Gallon bucket
fills in 45 seconds)

**MAXIMUM
EFFICACY**

10 GPM
(5 Gallon bucket
fills in 30 seconds)

TROUBLESHOOTING

Filter Does Not Rotate	Heavy filters might have difficulty properly gripping the support rods. If the support rods are turning and the filter is not rotating, try using the grip sleeves. Place 2 grip sleeves on each support rod, 1 under each flange.
	Make sure all filter pleats are wet first. A dry filter will get soaked on one side first and the unbalanced weight can prevent a complete a rotation.
	Your water pressure may be insufficient to operate the impeller. Make sure you have a flow rate of at least 5 GPM.
Low Flow Rate	If there is insufficient pressure coming from the PowerJets try closing off some PowerJets by adding more nozzle covers (Step 2). This will increase the water pressure available to the remaining PowerJets.
	If the flow rate is too low try using a different spigot where the water pressure might be higher. Typically, spigots near the front of the house or main line have better flow rates.
	Coil-type hoses can decrease your available water pressure -- make sure you are using a standard diameter hose of 50 ft. or less.
Water leaks during use	It is normal to observe some water escaping from around the support rods – the unit design allows for this and it will not affect the performance. With higher water pressures some water may also escape from around the seals of the PowerJet, but this too will not affect the unit's performance.
Water stays in device	There is a small drain hole in the bottom of the main housing to help drain the water after use. You can turn the nozzles down on the PowerJet to drain the water more quickly. However, there will always be some water that remains in the device after use.

ONE YEAR LIMITED WARRANTY

Your new Neoterics product is warranted to the original consumer against defects or workmanship and materials for a period of one year from the original purchase date. Should there be a defect or malfunction of this product, Neoterics will repair or replace the product, at Neoterics' option, free of charge other than the postage required.

This warranty is void if the product has been subject to damage, unreasonable use, improper service, or other causes not arising from defects in original material or workmanship.

There are no expressed warranties other than those stated herein.

Any expressed or implied warranties, including but not limited to merchantability and fitness for a particular purpose are limited to the above one-year warranty period. Neoterics shall not be liable for any incidental or consequential cost, expenses or damages resulting from any failure defect or malfunction of this product.

This warranty grants you specific legal rights, and you may also have other rights that vary from state to state.

Neoterics, Inc.
119 N. Maple St., Unit S
Corona, CA 92880
951-808-4744



NEOTERICS, Inc.

INNOVATION AT WORK

119 N. Maple St., Unit S
Corona, CA 92880
951-808-4744
951-808-4834 (Fax)



See what's new at...

www.neoterics.com